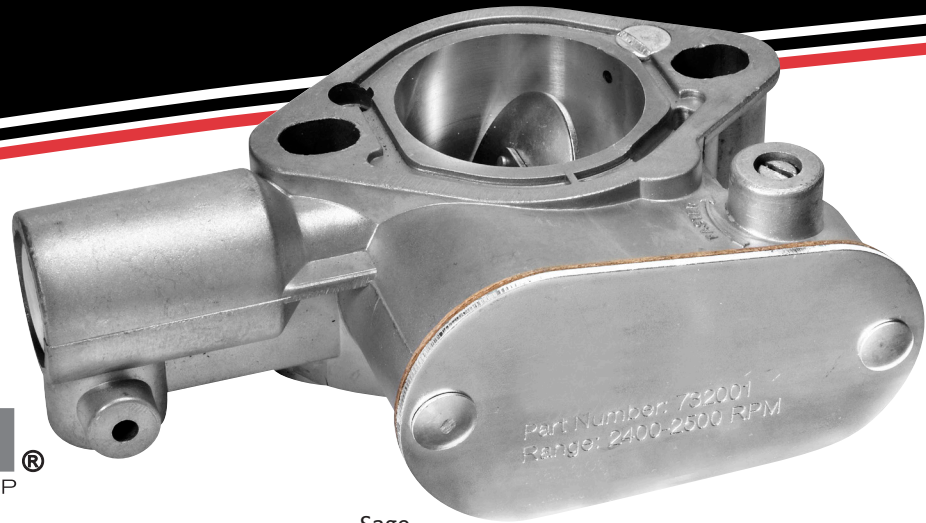


PRODUCT SHEET:

RAMPTECH® NEW AND IMPROVED SPEED GOVERNOR


RAMPTECH®
ENGINEERED FOR THE RAMP



Sage
Part Number 732001

**Completely redesigned, fully tested.
Uniquely efficient.**

The RAMPTECH® Governor is the result of innovative advancements in engineering, providing vast improvements on the Hoof model to help the engine achieve equilibrium – enabling GSE to run at a relatively constant and highly efficient speed.

Beware of the many imitations of this governor. Only the RAMPTECH® Governor is entirely redesigned and fully tested as well as 100% quality-controlled to assure the best possible performance and unmatched reliability. They might look the same on the outside, but they are not on the inside. Engineering enhancements include simplified interval adjustment mechanism, redesigned and enhanced leaf spring, stainless steel adjustment screw and hardened steel e-clip.

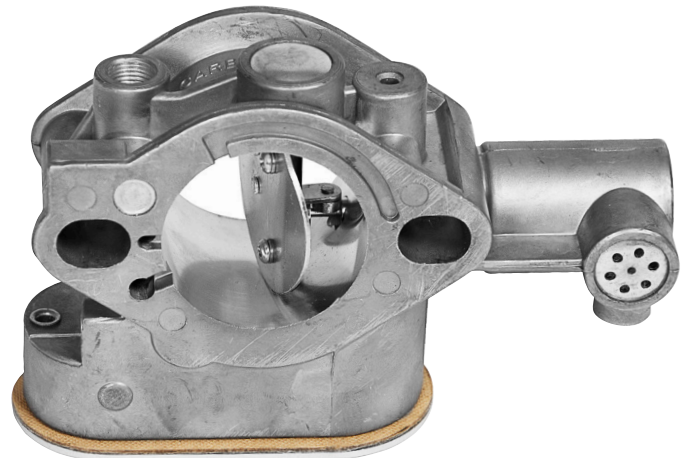
FEATURES

- ✓ These RAMPTECH® Governors are new without a core charge
- ✓ Robust product with high reliability
- ✓ Range: 2,400-2,500 RPM
- ✓ Fitted for the Ford 300 (4.9L) engine
- ✓ Goes through an extensive QC check



IMPROVEMENTS

- ✓ Simplified interval adjustment mechanism
- ✓ Enhanced leaf spring design and material
- ✓ Stainless steel adjustment screw
- ✓ Hardened steel e-clip
- ✓ All gaskets included



REPLACES

Motorcraft - D7JL12450M, D7JL12480A
Tug - T6-1001-105
Clark - 993610
Tiger - TIG1001105

SAGE
PARTS

Anticipating needs, meeting demands. Reducing costs.



Sage Parts
30 Hub Drive, Melville, NY 11747
+1.877.SAGE.877 | +1.631.501.1300 Tel
+1.631.501.1619 Fax
info@sageparts.com

www.sageparts.com