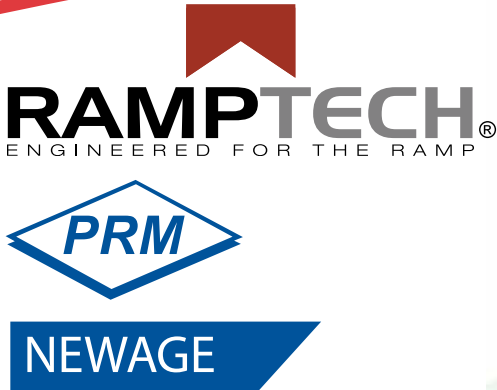


# PRODUCT SHEET:

## RAMPTECH® NEWAGE TOW TRACTOR AXLES



### RAMPTECH® NEWAGE 512 SERIES AXLE

Sage Part Numbers:  
512B20T081 (19.9:1 ratio)  
512B16T081 (15.8:1 ratio)



### Durable designs that handle heavy duty demands.

Finally, a range of drive axles that can handle very high torque loads while combating the rigors of the ramp. The RAMPTECH® NEWAGE drive axles are specifically developed to sustain the demands of baggage and freight tow tractors. These axles are designed as direct drop-in replacements and are compatible with many of the common brands and models of tractors. All of the RAMPTECH® NEWAGE axles are built to withstand the demanding range of applications encountered in the GSE industry. The improved design of the RAMPTECH® NEWAGE axles makes them the optimal extended life replacement for the old Rockwell AxleTech, Clark, and Spicer design axles.

Each series (512, 515, 612, 613) of the RAMPTECH® NEWAGE double reduction rigid drive axle incorporates a unique inboard planetary design - allowing for the use of standard wheels. The innovative axle design also reduces labor time when brake service is required. Multiple axle ratios are available as well as optional disc mounted park brakes. All axle models with brakes include dual caliper hydraulic disc brakes.

A variety of track widths, mounting options, and spring centers are also available. The details in this brochure represent the standard units.

### FEATURES

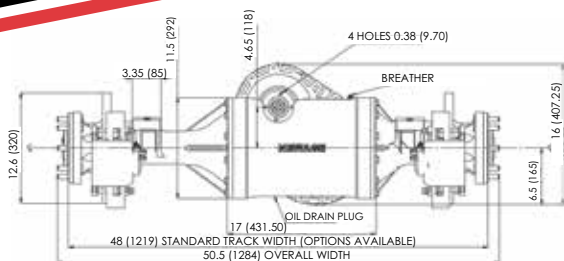
- ✓ Direct no hassle bolt on conversion
- ✓ Axle load capacities of 3,500 lbs to 11,000 lbs
- ✓ Draw bar pull capabilities from 4,000 lbs to 12,000 lbs
- ✓ Double and triple reductions – inboard planetary design
- ✓ Uses standard and readily available wheel rims
- ✓ Multiple ratios offered
- ✓ Variety of track widths, mounts, and centers
- ✓ Uses standard dual caliper brakes
- ✓ Park brake option is available
- ✓ Heavy duty, compact, durable, and robust
- ✓ Designed to take the very high wheel torque loads
- ✓ The only rigid axle with a triple reduction available

See all basic specifications on back

[www.sageparts.com](http://www.sageparts.com)

# TOW TRACTOR AXLES:

## 512 AND 515 SERIES TOW TRACTOR AXLES



### TUG MODELS

SAGE PART NUMBER		MODEL	RATIO	MOUNTING CONFIGURATION
PARK BRAKE	W/O PARK BRAKE			
512PB20T081	512B20T081	MA30/MA50	19.9:1	Leaf Spring Over
512PB16T081	512B16T081	MA30/MA50	15.8:1	Leaf Spring Over

### CHARLOTTE MODELS

512PB16C211	512B16C211	CT5G	15.8:1	Leaf Spring Under
-------------	------------	------	--------	-------------------

### TROWIN MODELS

512PB20C211	512B20C211	MK3	19.9:1	Leaf Spring Under
-------------	------------	-----	--------	-------------------

### TAYLOR DUNN MODELS

512PB20T081	512B20T081	TC30/TC60	19.9:1	Leaf Spring Over
512PB20T081	512B16T081	TC30/TC60	15.8:1	Leaf Spring Over

### NMC WOLLARD MODELS

512PB16N012	512B16N012	60 with 31.44 in (798.58 mm) centers	15.8:1	Leaf Spring Over
-------------	------------	--------------------------------------	--------	------------------

## The 515 series axle - A Toyota tractor's new best friend.

The RAMPTECH® NEWAGE 515 series axle is specially designed to be used as a replacement axle for Toyota brand tractors.



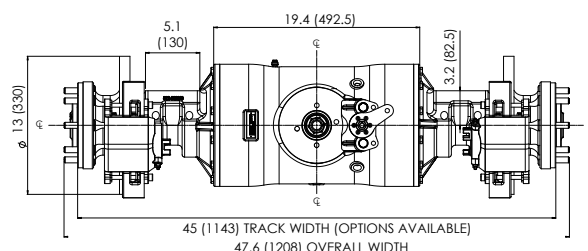
### TOYOTA MODEL

PARK BRAKE	W/O PARK BRAKE	MODEL	RATIO	MOUNTING CONFIGURATION
515PB12T141	N/A	TD25	12.3:1	Leaf Spring Over

## The 512 series axle - a perfect fit.

The RAMPTECH® NEWAGE 512 series axle is the ideal replacement axle for use with most standard baggage and freight tow tractors. The 512 was designed with easy installation in mind and can bolt seamlessly into compatible tractors.

The 512 is available in a number of other models to accommodate for many popular brand name equipment manufacturers in the industry. Additional information, axle mountings, configurations, and models are also available upon request.



# TOW TRACTOR AXLES:

## 612 AND 613 SERIES TOW TRACTOR AXLES

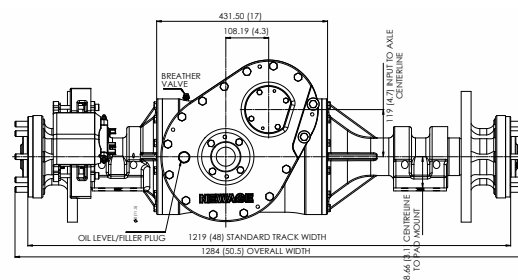
### The right replacements. The most reliable performance.

The 612 and 613 tow tractor axles are available in a variety of ratios to suit your specific ground support operation needs. Each axle can be used as a drop-in replacement for many existing axles in most models of baggage tractors.

#### NMC WOLLARD M100 AND TAYLOR DUNN TC100 / 120 (REPLACES TA268)

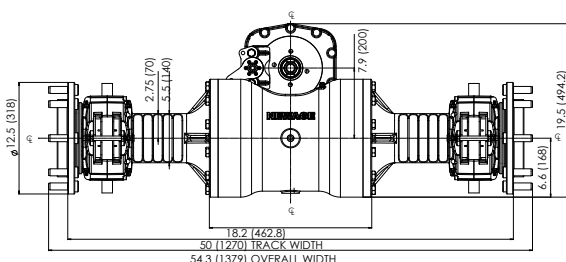
SAGE PART NUMBER	TRACK	RATIO	PILOT	STUD SIZE
612B13N011	48 in (1,219.2 mm)	13.7:1	6.5 in (165.1 mm)	9/16 UNF
612B16N011	48 in (1,219.2 mm)	15.78:1	6.5 in (165.1 mm)	9/16 UNF
612B20N011	48 in (1,219.2 mm)	19.74:1	6.5 in (165.1 mm)	9/16 UNF

612B13N01	48 in (1,219.2 mm)	13:1	8.66 in (220 mm)	0.79 x .059 x 1.97 in 20 x 1.5 x 50 mm
612B16N01	48 in (1,219.2 mm)	16:1	8.66 in (220 mm)	0.79 x .059 x 1.97 in 20 x 1.5 x 50 mm
612B20N01	48 in (1,219.2 mm)	20:1	8.66 in (220 mm)	0.79 x .059 x 1.97 in 20 x 1.5 x 50 mm



#### TA268 REPLACEMENT WITH LARGER PCD STUD PATTERN

612B13N012	48 in (1,219.2 mm)	13.7:1	10.83 in (275 mm)	M20
612B16N012	48 in (1,219.2 mm)	15.78:1	10.83 in (275 mm)	M20
612B20N012	48 in (1,219.2 mm)	19.74:1	10.83 in (275 mm)	M20



#### TUG MT12 / MR10 (REPLACES OMSI)

SAGE PART NUMBER	TRACK	RATIO	PILOT	STUD SIZE
613B10T071	50 in (1,270 mm)	10.14:1	10.83 in (275 mm)	M20
613B13T071	50 in (1,270 mm)	13.7:1	10.83 in (275 mm)	M20
613B16T071	50 in (1,270 mm)	15.79:1	10.83 in (275 mm)	M20
613B20T071	50 in (1,270 mm)	19.74:1	10.83 in (275 mm)	M20
613PB10T071	50 in (1,270 mm)	10.14:1	10.83 in (275 mm)	M20
613PB13T071	50 in (1,270 mm)	13.17:1	10.83 in (275 mm)	M20
613PB16T071	50 in (1,270 mm)	15.79:1	10.83 in (275 mm)	M20
613PB20T071	50 in (1,270 mm)	19.74:1	10.83 in (275 mm)	M20

# TOW TRACTOR AXLES:

## RAMPTECH® NEWAGE AXLES:

### STANDARD SPECIFICATIONS

#### AXLE SPECIFICATIONS BY SERIES

SERIES	512	515	612	613
AXLE RATIOS AVAILABLE	15.8:1 / 19.9:1	9.1:1 / 12.3:1 / 14.8:1 15.8:1 / 18.6:1	13.2:1 / 15.8:1 / 19.7:1	10.1:1 / 13.2:1 / 15.8:1 19.7:1
MAXIMUM LOAD RATING	6,614 lbs (3,000 kg) based on 48 in (1,219 mm) wheel track	8,819 lbs (4,000 kg) based on 48 in (1,219 mm) wheel track	11,000 lbs (5000 kg) based on 48 in (1219 mm) wheel track	11,000 lbs (5,000 kg) based on 50 in (1,270 mm) wheel track
TYPICAL DRAW BAR PULL	6,000 lbs (26,700 N)	6,000 lbs (26,700 N)	12,000 lbs (53,400 N)	12,000 lbs (53,400 N)
BRAKES	Dual caliper hydraulic disc brakes	Dual caliper hydraulic disc brakes	Dual caliper hydraulic disc brakes	Dual caliper hydraulic disc brakes
DRY WEIGHT	Approximately 661 lbs (300 kg)	Approximately 551 lbs (250 kg)	Approximately 727 lbs (330 kg)	Approximately 880 lbs (400 kg)
PARK BRAKE	Optional (Disc mounted)	Optional (Disc mounted)	Optional (Disc mounted)	Optional (Disc mounted)
WHEEL FIXINGS	8 studs: 9/16 x 18 UNF - 3A on 6.5 in PCD (165.1 mm)	8 studs: 9/16 x 18 UNF - 3A on 6.5 in PCD (165.1 mm)	Eight M20 x 1.5 studs on 275mm (10.83in) PCD or Eight 9/16 x 18 UNF - 3A studs on 165.1 mm (6.5 in) PCD	Eight M20 x 1.5 studs on 275 mm (10.83 in) PCD or Eight 9/16 x 18 UNF - 3A studs on 165.1 mm (6.5 in) PCD
STANDARD MOUNTINGS	30.11 in (765 mm) mounting centers, across 6.25 in (158.75 mm) with 4 x 0.811 in (20.6 mm) diameter holes*	27.15 in (689.5 mm) mounting centers, across 6.25 in (158.75 mm) with 4 x 0.811 in (20.6mm) diameter holes. Mounting pad also includes 4 x 0.67 in (17 mm) diameter through holes for U-Bolt mounting	Numerous mounting options available between 23.5 in (597 mm) and 28 in (711 mm)	25.3 in (643.33 mm), 27.6 in (700 mm), 29.8 in (756.67 mm), 32 in (813.33 mm) and 34.25 in (870 mm)
INPUT FLANGE	HS1310	HS1310	HS1410	HS1410

\*Optional mountings and track widths are available upon request.

Sage Parts  
30 Hub Drive, Melville, NY 11747  
+1.877.SAGE.877 | +1.631.501.1300 Tel  
+1.631.501.1619 Fax  
info@sageparts.com

**SAGE**  
**PARTS**  
Anticipating needs, meeting demands. Reducing costs.



1.877.SAGE.877